



## ***Working side-by-side***

When it comes to heavy outdoor work, teamwork is everything. The Rhino 700 lets busy workers journey through demanding terrain – side-by-side.

At its heart is a serious 686cc engine, which gives the kind of unrelenting, high-traction torque needed to get big loads moving. Fully independent, double wishbone suspension and an On-Command® drive system keep you comfortable during a busy working day – while a big 30-litre tank means more time spent working, and less spent refilling.

It's economical with fuel, needs minimal maintenance, and has a range of dedicated accessories to help further cut your workload. Special edition Satin Black comes with aluminium wheels and sun top.

- ▶ Liquid-cooled 686cc, 4-stroke engine with EFI
- ▶ Fuel-efficient & low maintenance
- ▶ Ultramatic® transmission dual-range and reverse
- ▶ On-Command® 2WD/4WD drive with differential lock
- ▶ Fully independent 4-wheel suspension
- ▶ Dual hydraulic front/rear disc brakes
- ▶ Big 30-litre fuel tank for hours of off-road fun
- ▶ Comfy interior with automotive style controls
- ▶ Multifunction digital LCD display
- ▶ Tough roto-molded doors keep mud, water & dirt out
- ▶ Stamped steel dump bed with latch
- ▶ Adjustable anti-cinch seatbelts for added comfort



## ***Share the load - or the fun together***

Whether you're a busy pair of outdoor workers with a large area to cover, or just two friends eager for great outdoor adventures - Yamaha side-by-side vehicles let you head into the wilderness together.

Rugged on the outside, housing sophisticated Yamaha technologies and comfort on the inside and very user-friendly, Rhinos are also pleasingly economical with fuel, and don't require much maintenance to keep them running.

Deep bucket seats, adjustable seatbelts and conveniently placed grab-rails, give all-day comfort and true convenience is a given out on the trails. And with the roomy cargo bed, you can make the trip as long as you want.





**Precision engine design**

The liquid-cooled, 686cc 4-stroke engine used in the Rhino 700 is designed to give you high levels of torque at low and mid range rpm. The result is increased traction on all kinds of terrain. Yamaha's Electronic Fuel Injection system provides impressively smooth power and auto-compensates for altitude.

**Effortless Ultramatic® transmission**

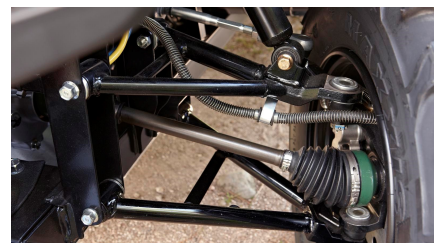
A fully automatic gearbox - with high and low drive ranges - contributes to the effortless, exhilarating experience of driving the Rhino 700.

**OnCommand® 2WD, 4WD & front-locked differential 4WD**

When the trail gets tough, switch from 2WD to 4WD - or front locked-differential 4WD - at the push of a button. This puts every ounce of engine power straight to the ground.

**Independent double wishbone suspension**

Fully independent, double wishbone suspension with adjustable preload ensure that tyres stay in contact with the ground longer, providing both comfort and traction.

**Dual hydraulic front/rear disc brakes**

Superior braking performance is delivered by dual hydraulic front and rear disc brakes. The automotive-style parking brake lever makes sure the Rhino stays where you left it.

**Digital Information Panel**

A digital instrument panel boasts a multifunction LCD display featuring speedometer, odometer, dual tripmeters, hour meter, 4WD status, transmission position, clock and fuel gauge.



### Engine

Engine type	Single cylinder, liquid-cooled, 4-stroke, SOHC, 4-valves
Displacement	686cc
Bore x stroke	102.0 mm x 84.0 mm
Compression ratio	9.2 : 1
Lubrication system	Wet sump
Fuel system	Electronic Fuel Injection
Ignition system	TCI
Starter system	Electric
Transmission system	Yamaha Ultramatic® V-belt
Drive system	On-Command® 2WD, 4WD with Diff-lock
Final transmission	Shaft

### Chassis

Front suspension system	Independent double wishbone, 185 mm wheel travel, 5-way preload adjustment
Rear suspension system	Independent double wishbone, 185 mm wheel travel, 5-way preload adjustment
Front brake	Dual hydraulic disc
Rear brake	Dual hydraulic disc
Front tyres	AT25x8-12
Rear tyres	AT25x10-12

### Dimensions

Overall length	2,885 mm
Overall width	1,385 mm
Overall height	1,853 mm
Seat height	818 mm
Wheelbase	1,910 mm
Minimum ground clearance	280 mm
Wet weight (including full oil and fuel tank)	540 kg
Fuel capacity	30.0 litres
Oil capacity	3.0 litres

### Loading limits

Cargo bed	181 kg
-----------	--------

The specification and appearance of Yamaha products will be varied from time to time without notice, and those shown here are for illustrative purposes only and are not contractual descriptions of products. Some models are shown with optional accessories. Yamaha Side-by-Side Vehicles are built to operate within their design limits. Safe towable weights, together with maximum carrying capacity are identified in the owner's manual if applicable. For durability, reliability, but most important of all, operator and passenger safety, under no circumstances should the recommended capacities be exceeded. Our Side-by-Side Vehicles are recommended for use only by riders of 16 years and older. Always avoid paved surfaces. Side by Side Vehicles are designed for unpaved surfaces only. Riding on paved surfaces may seriously affect handling and control and can cause loss of control. Always wear a helmet, eye protection, and protective clothing. Always wear a seatbelt. Never engage stunt riding. Riding and alcohol/drugs don't mix. Avoid excessive speed. And be particularly careful on difficult terrain. Please 'tread lightly': always ride in a responsible manner, respecting the environment as well as country and local laws. Yamaha recommends that all Side-by-Side Vehicle riders take an approved training course. For safety and training information, see your dealer or call your Yamaha Distributor in your country. All Side-by-Side Vehicles come with a 12-month Limited Factory Warranty. See your dealer for details.



# Rhino 700 / SE

[www.yamaha-motor.eu](http://www.yamaha-motor.eu)

## Colours



Satin Black



Solid Green

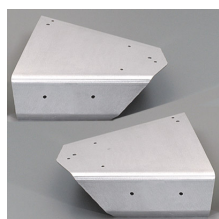


Red Spirit



Yamaha Blue

## Featured accessories



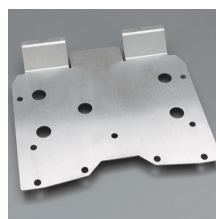
A-Arm Guards Front  
Rhino - Aluminium



A-Arm Guards Rear  
Rhino - Aluminium



Class 2 Trailer Hitch



Engine/Frame Skid  
Plate Rhino

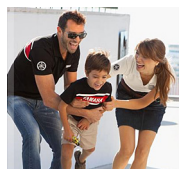


Folding Windshield  
Rhino - Clear



Front Bash Plate  
Rhino

For all Rhino 700 / SE accessories go to the website, or check your local dealer



## The Yamaha Chain of Quality

Yamaha technicians are fully trained and equipped to offer the best service and advice for your Yamaha product. For this reason, Yamaha strongly recommends visiting an official Yamaha dealer for all your service requirements.

Yamaha Genuine Parts & Accessories are especially developed, designed and tested for our Yamaha product range. Yamaha also recommends the use of Yamalube®, our own range of high-tech lubricants – the lifeblood of Yamaha engines. They are developed to carry on working effectively, no matter where you ride.

Besides functional and style accessories, Yamaha offers a range of high quality, innovative riding gear designed to keep you comfortable and protected. An extensive range of casual wear is also available. For more information go to:

[www.yamaha-motor-acc.com](http://www.yamaha-motor-acc.com)



Experience more of the  
Yamaha Rhino 700 / SE with your  
mobile

Yamaha Motor Europe  
Koolhovenlaan 101  
1119 NC Schiphol-Rijk  
The Netherlands